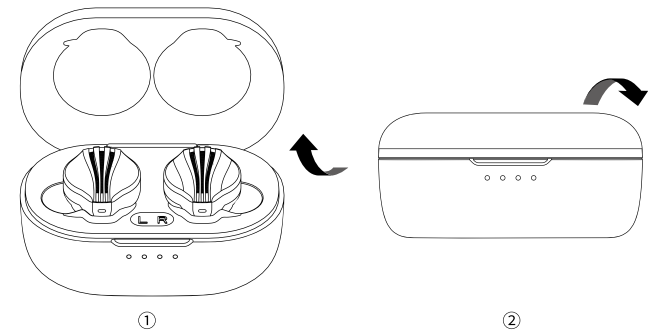


Power ON/OFF

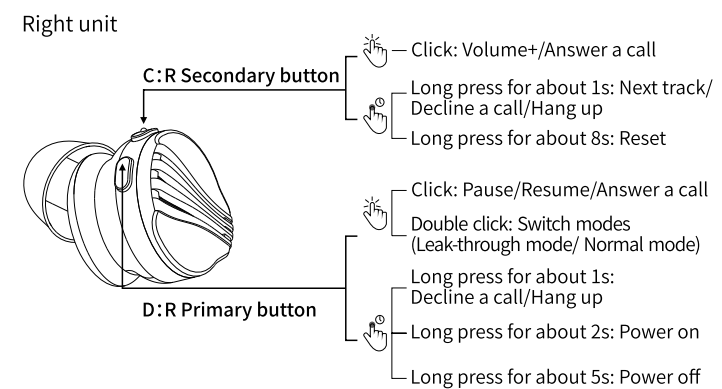
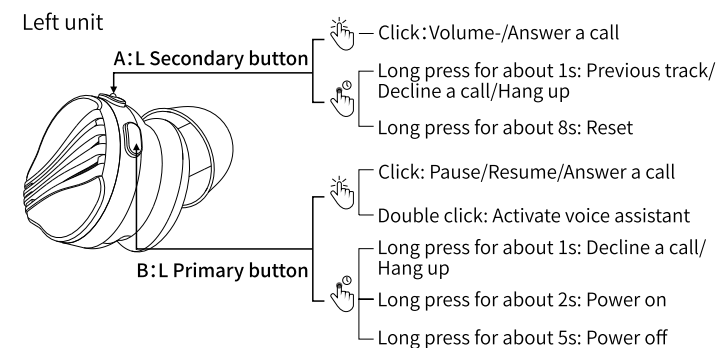


①Power on and connect:
When using the FW5 for the first time, open the charging case, the white lights of the two units will be continuously on for about 3s, and then the FW5 will turn on automatically and enter Bluetooth pairing mode. At this time, your device can search for and connect to the "FiiO FW5". In follow-up uses, it can automatically reconnect to this device once being powered on.

②Charging when powered off:
Put the two units into the charging case and close it. The FW5 will automatically turn off and enter charging state.

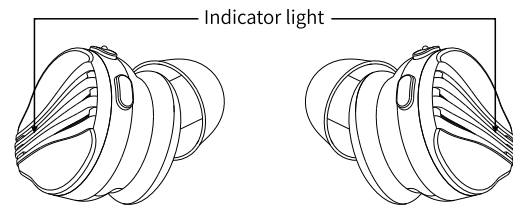
(Note: Please tear off the adhesive insulation paper on the metal contact before use.)

Instructions for buttons of the two units



Note:
Force into pairing mode: Turn off the FW5. Long press buttons B and D at the same time for about 5s. When the white light of the unit is continuously on for about 3s and then flashes quickly, it will be forced into the pairing mode.

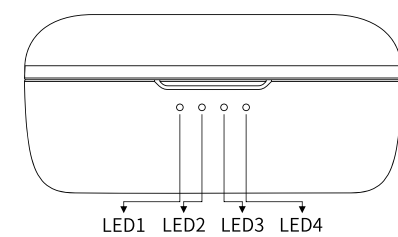
Indicator lights of FW5



Power on/off	○ White lights continuously on for 3s
TWS pairing mode	◐ White lights flash slowly
Standard Bluetooth pairing mode	◑ White lights flash fast

Note: TWS pairing mode means pairing between the L and R units. Under this state, the FW5 cannot be searched for by any transmitting devices.

Indicator lights of charging case



○ Continuously on ◐ Flashing ● OFF

Status	Battery level	LED1	LED2	LED3	LED4
Charging	Full	○	○	○	○
	75%~100%	○	○	○	◐
	50%~75%	○	○	◐	●
	25%~50%	○	◐	●	●
Discharging (Open/Close the case/FW5 inside the case)	0%~25%	◐	●	●	●
	75%~100%	○	○	○	○
	50%~75%	○	○	○	●
	25%~50%	○	○	●	●
FW5 inside the case)	5%~25%	○	●	●	●
	0%~5%	◐	●	●	●

Note:
The case is discharging (Open/Close the case/Put in the units):
1. When the battery level is between 0% and 5%, the LED1 will flash for 4s and then be off.
2. When the battery level is at other levels, the corresponding indicator will be on for 4s and then be off.

FiiO Control

The FiiO FW5 can be controlled by the FiiO Control APP. Go to the APP market, searching for "FiiO Control" to download it. OTA upgrade, volume adjustment and many other features are all available in FiiO Control.

Notes and Precautions

- ★ It is recommended to charge the device using a standard 5V charger or charger that could output 1A current or above.
- ★ Please do not place the device in circumstances of excessive high/low temperatures (above 45°C or below 0°C).
- ★ Bluetooth wireless technology has a working scope of approximately 10 meters. Transmission distance is affected by obstacles (human, metal objects, walls, etc.) or electromagnetic environments, which may lead to noise or audio loss.
- ★ Prolonged use of high volume may result in permanent hearing loss. Switching between audio sources may cause a sudden change in volume. Please turn the headphone volume to a lower level before wearing it.
- ★ If the device is to be left unused for a long time, please recharge it periodically to preserve its battery life.
- ★ Please do not use the battery after it is soaked in water; do not use the battery if it is severely swollen; do not disassemble, bump and squeeze the battery, or drop it into fire.

List of Items Included

- FW5
- USB Type-C cable
- Charging case
- Quick start guide
- Ear tips
- Warranty card

To Learn More

To learn more about the product, please visit our website: www.fiio.com
For related product service, please visit <https://www.fiio.com/supports>



WEEE Directive & Product Disposal

At the end of its serviceable life, this product should not be handed as household or general waste. It should be handed over to the applicable collection point for the recycling of electrical and electronic equipment, or returned to the supplier for disposal.
Internal/Supplied Batteries:
This symbol on the battery indicates that the battery is to be collected separately. This battery is designed for separate collection at an appropriate collection point.
Qualcomm is a trademark of Qualcomm Incorporated, registered in the United States and other countries. aptX is a trademark of Qualcomm Technologies International, Ltd., registered in the United States and other countries.



Hereby, Guangzhou FiiO Electronics Technology Co., Ltd declares that this device is in compliance with Directive 2014/53/EU. The full text of the EU declaration of conformity is available at: www.fiio.com/doc

Function	Frequency	Maximum output power
Bluetooth	2402-2480MHz	7.1dBm



FCC STATEMENT

1. This device complies with Part 15 of the FCC Rules. Operation is subject to the following two conditions:
(1) This device may not cause harmful interference, and
(2) This device must accept any interference received, including interference that may cause undesired operation.
2. Changes or modifications not expressly approved by the party responsible for compliance could void the user's authority to operate the equipment.