

# QUICK START GUIDE

PARTYBOX  
STAGE320



HARMAN



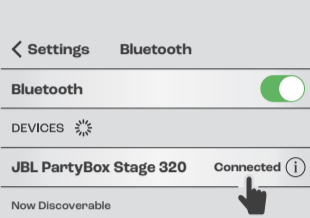
## WHAT'S IN THE BOX



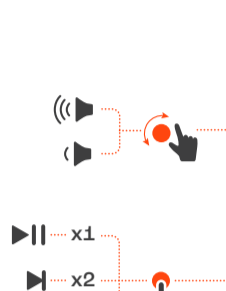
\* Power cord quantity and plug type vary by regions.



## BLUETOOTH PAIRING



## PLAY

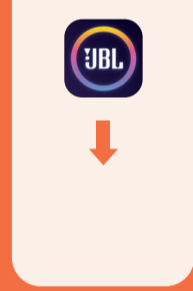


## LIGHTSHOW



Apply lightshow presets and more with the JBL Partybox app.

## APP



Download and install the JBL PARTYBOX app to get more from the product.

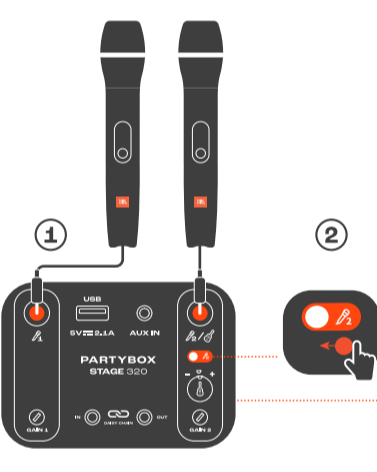


JBL PARTYBOX

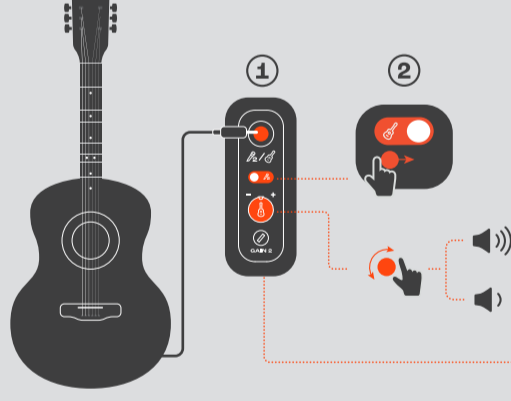
GET IT ON Google Play

Download on the App Store

## MICROPHONE



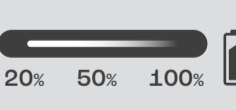
## GUITAR



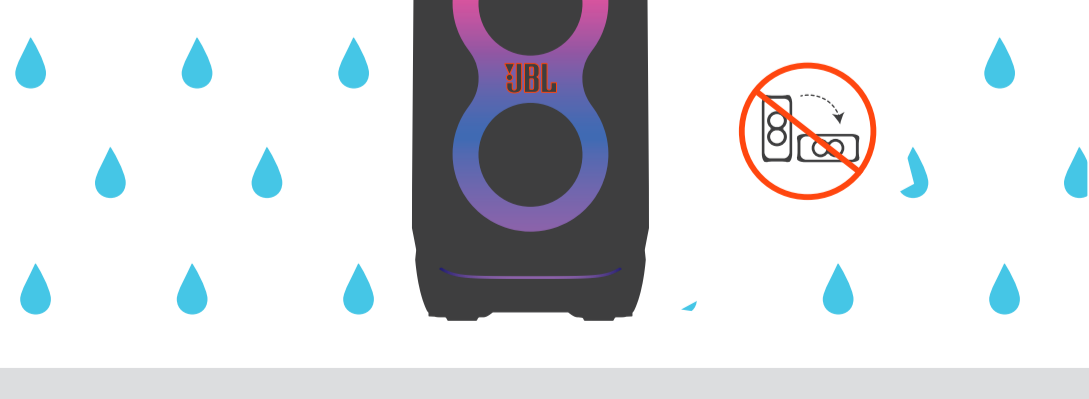
## MULTI-SPEAKER CONNECTION



## CHARGING



## SPLASH PROOF IPX4



## HANDLE

